

SOUTH PORTSLADE



PLAN SHOWING PROPOSED CHANGES TO PARKING RESTRICTION

ALBION STREET, PORTSLADE

KEY:- ***** PROPOSED SINGLE YELLOW LINE MONDAY TO SATURDAY 8AM TO 6PM

REASON:- TO PREVENT PARKING IN THIS LOCATION DURING THE DAY AS THIS CAUSES AN OBSTRUCTION (*the line is not being altered on the ground but the description in the order is being simplified*)

SCALE : NOT TO SCALE REFER ONLY TO MEASUREMENTS

Please see formal notice, to see what other roads have restrictions proposed, where to view the plans and traffic order and how to object or support this proposal

SOUTH PORTSLADE



PLAN SHOWING PROPOSED CHANGES TO PARKING RESTRICTION

ALBION STREET, PORTSLADE

KEY:- ***** PROPOSED SINGLE YELLOW LINE MONDAY TO SATURDAY 8AM TO 6PM

REASON:- TO PREVENT PARKING IN THIS LOCATION DURING THE DAY AS THIS CAUSES AN OBSTRUCTION *(the line is not being altered on the ground but the description in the order is being simplified)*

SCALE : NOT TO SCALE REFER ONLY TO MEASUREMENTS

Please see formal notice, to see what other roads have restrictions proposed, where to view the plans and traffic order and how to object or support this proposal

SOUTH PORTSLADE



PLAN SHOWING PROPOSED CHANGES TO PARKING RESTRICTION

ALBION STREET, PORTSLADE

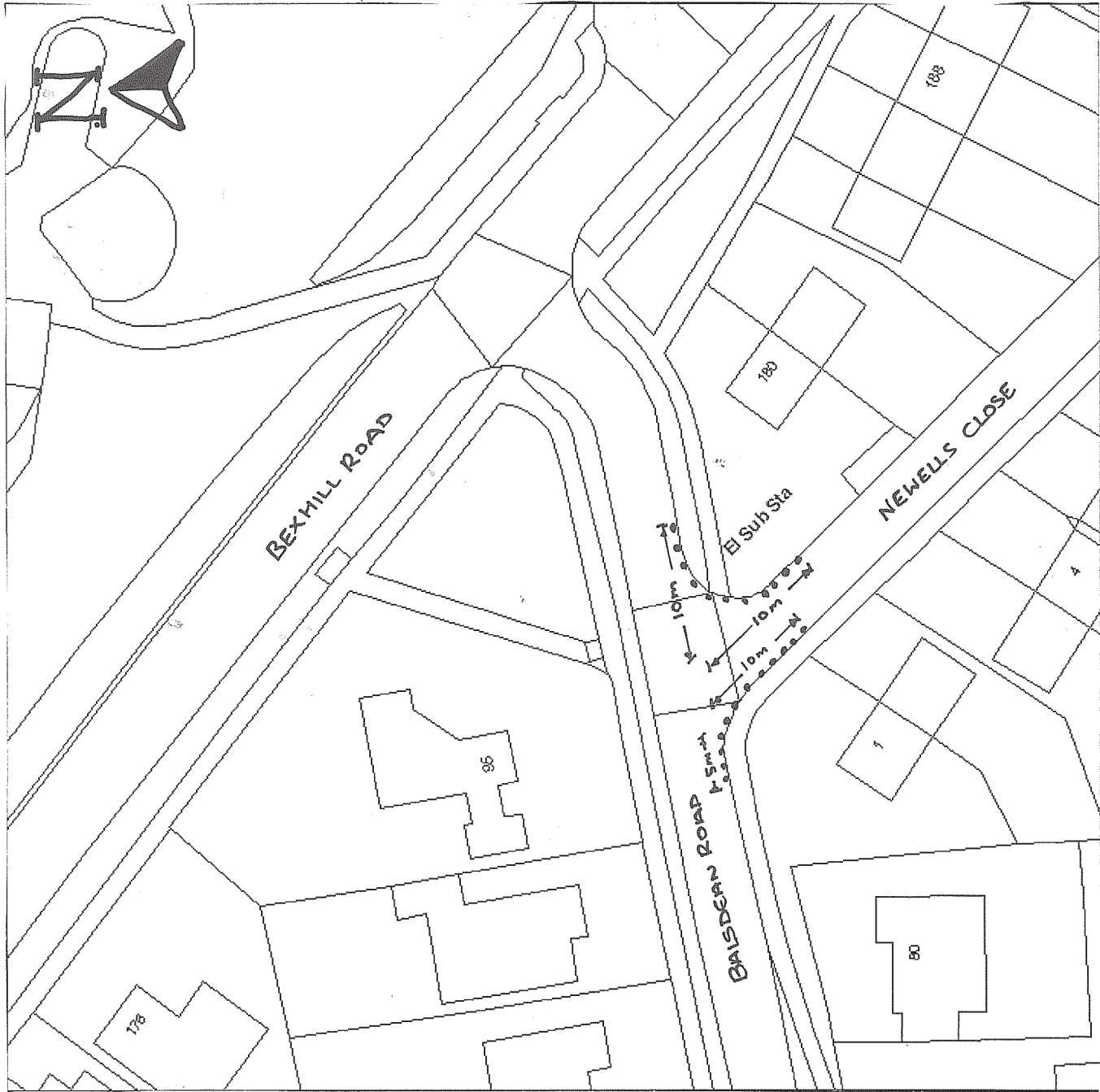
KEY:- ***** PROPOSED SINGLE YELLOW LINE MONDAY TO SATURDAY 8AM TO 6PM

REASON:- TO PREVENT PARKING IN THIS LOCATION DURING THE DAY AS THIS CAUSES AN OBSTRUCTION *(the line is not being altered on the ground but the description in the order is being simplified)*

SCALE : NOT TO SCALE REFER ONLY TO MEASUREMENTS

Please see formal notice, to see what other roads have restrictions proposed, where to view the plans and traffic order and how to object or support this proposal





PLAN SHOWING PROPOSED CHANGES TO PARKING RESTRICTION

BAIKDEAN ROAD/NEWELLS CLOSE BRICLTON

CONTROLLED PARKING ZONE Z



PLAN SHOWING PROPOSED CHANGES TO PARKING RESTRICTION

CASTLE STREET & STONE STREET, BRIGHTON

KEY:- XX==XX PROPOSED NO LOADING/UNLOADING AT ANY TIME

REASON:- TO PREVENT OBSTRUCTION AND IMPROVE SAFETY FOR ALL ROAD USERS

SCALE : NOT TO SCALE REFER ONLY TO MEASUREMENTS

Please see formal notice, to see what other roads have restrictions proposed, where to view the plans and traffic order and how to object or support this proposal

CONTROLLED PARKING ZONE C



PLAN SHOWING PROPOSED CHANGES TO PARKING RESTRICTION

CHARLOTTE STREET, BRIGHTON

KEY:- CIC PROPOSED CAR CLUB BAY

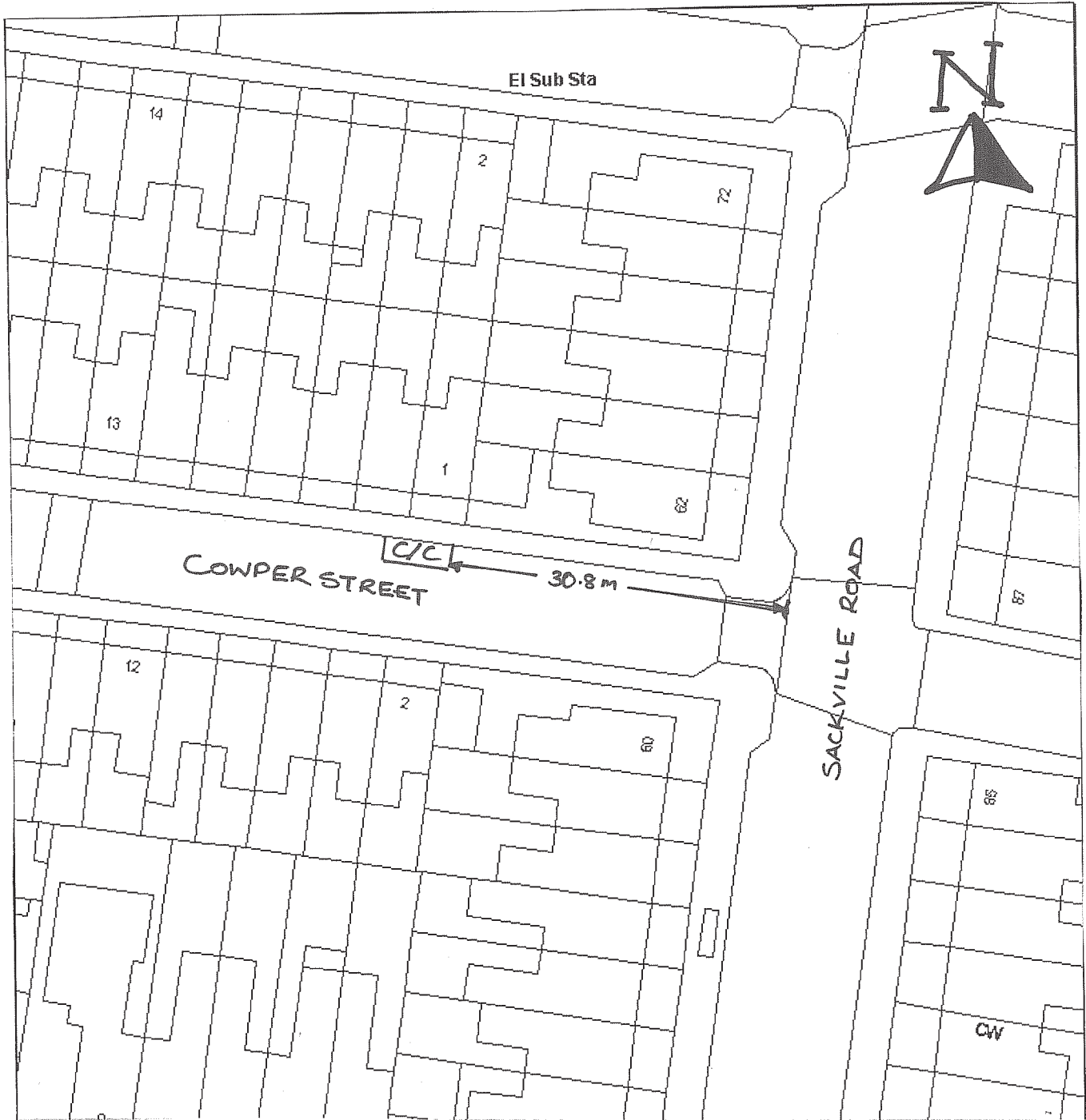
REASON:- TO PROVIDE A DESIGNATED PARKING BAY FOR VEHICLES USED BY BRIGHTON & HOVE CAR CLUB OPERATORS

SCALE : NOT TO SCALE REFER ONLY TO MEASUREMENTS

Reproduction from the Ordnance Survey mapping with the Permission of the Controller of H.M. Stationery Office. © Crown Copyright. Unauthorised reproduction infringes Crown copyright and may lead to prosecution or Civil Proceedings. Brighton & Hove Council. Licence : LA09068L, 2003.



CONTROLLED PARKING ZONE R



PLAN SHOWING PROPOSED CHANGES TO PARKING RESTRICTION

COWPER STREET, HOVE

KEY:- C/C PROPOSED CAR CLUB BAY

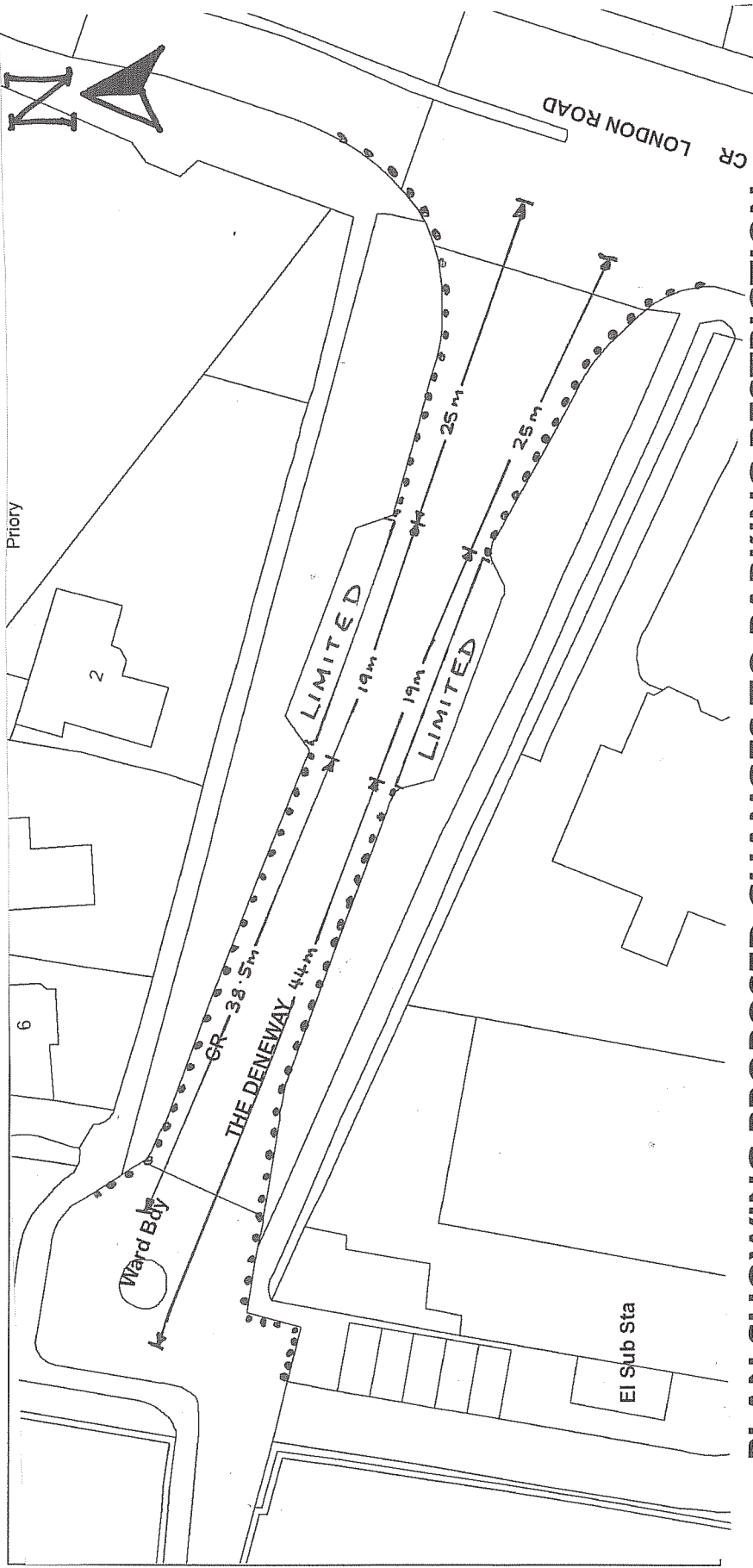
REASON:- TO PROVIDE A DESIGNATED PARKING BAY FOR VEHICLES USED BY BRIGHTON & HOVE CAR CLUB OPERATORS

SCALE : NOT TO SCALE REFER ONLY TO MEASUREMENTS

Reproduction from the Ordnance Survey mapping with the Permission of the Controller of H.M. Stationery Office. © Crown Copyright. Unauthorised reproduction infringes Crown copyright and may lead to prosecution or Civil Proceedings. Brighton & Hove Council. Licence : LA09068L, 2003.



WITHDEAN



**PLAN SHOWING PROPOSED CHANGES TO PARKING RESTRICTION
THE DENEWAY, BRIGHTON**

KEY:- PROPOSED DOUBLE YELLOW LINES

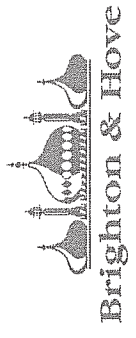
LIMITED

PROPOSED LIMITED WAITING 4 HOURS NO RETURN WITHIN 1 HOUR MON-SAT 8AM TO 6PM

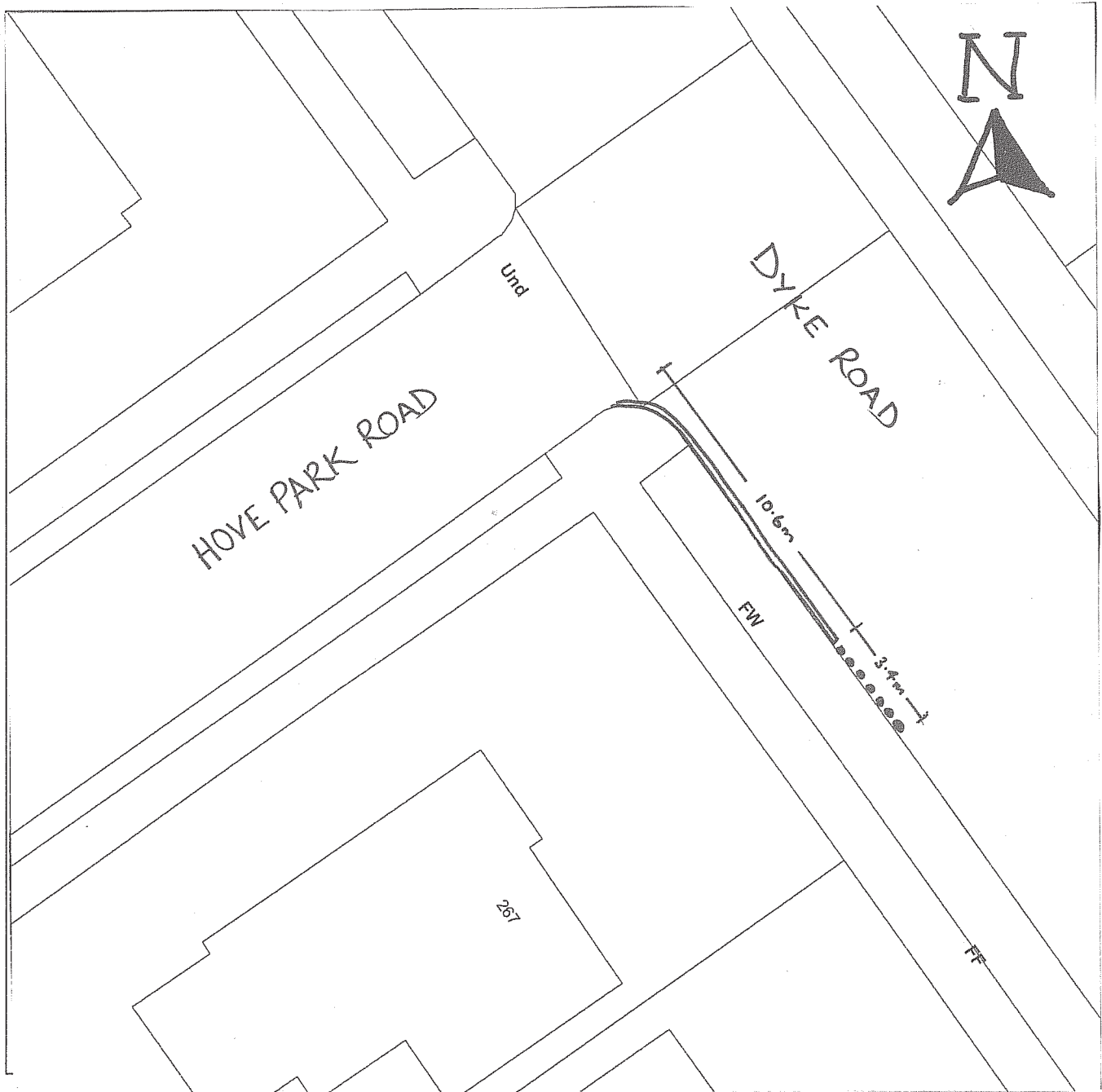
REASON:- TO IMPROVE THE SAFETY FOR BOTH PEDESTRIANS AND VEHICLES. IT HELPS PREVENT OBSTRUCTION TO ALL VEHICLES

SCALE: NOT TO SCALE REFER ONLY TO MEASUREMENTS

Reproduction from the Ordnance Survey mapping with the Permission of the Controller of H.M. Stationery Office. © Crown Copyright. Unauthorised reproduction infringes Crown copyright and may lead to prosecution or Civil Proceedings. Brighton & Hove Council. Licence : LA09068L, 2003.



HOVE PARK



PLAN SHOWING PROPOSED CHANGES TO PARKING RESTRICTION

DYKE ROAD, HOVE

KEY:- PROPOSED DOUBLE YELLOW LINES
 === EXISTING DOUBLE YELLOW LINES

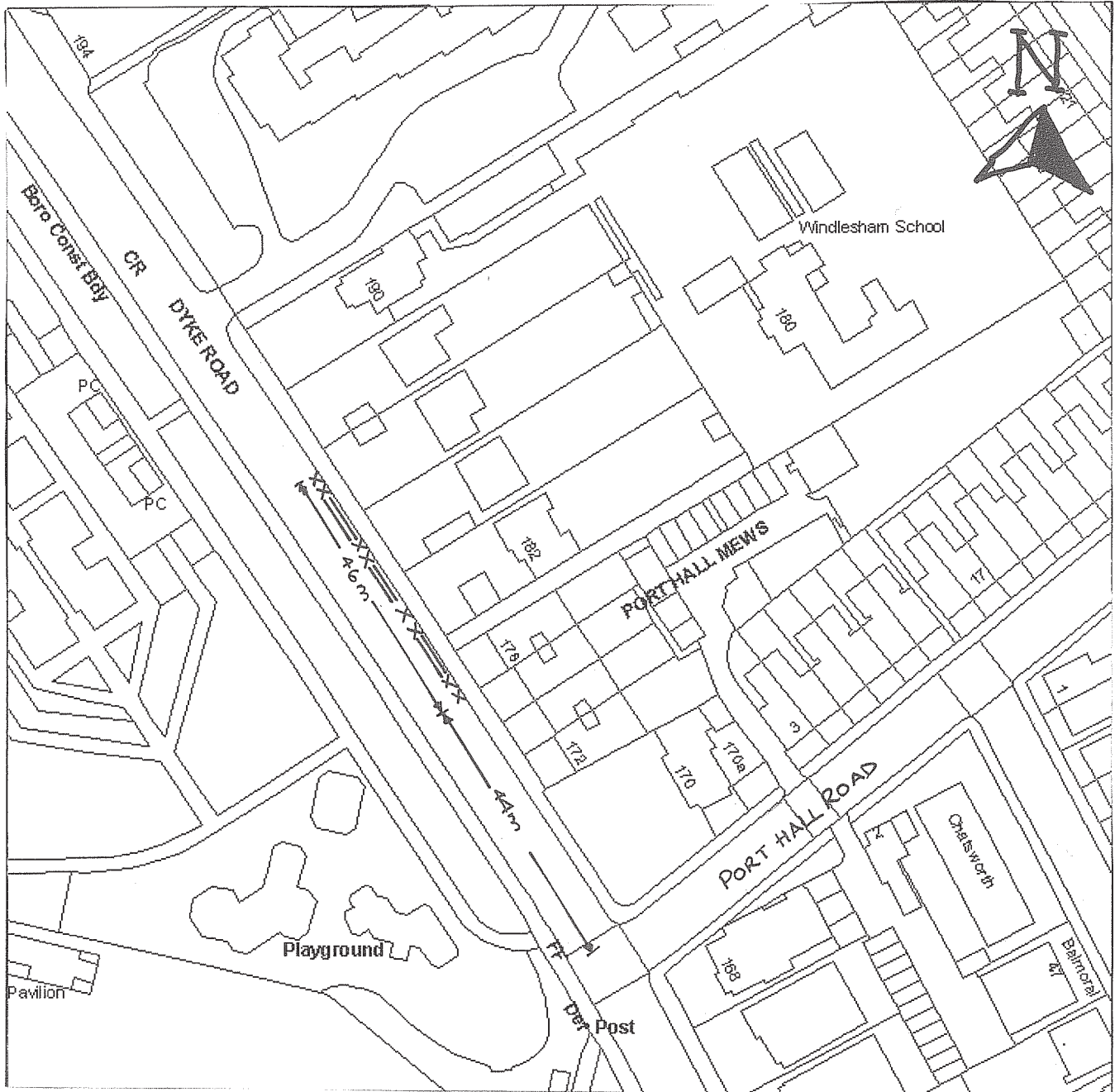
REASON:- TO PREVENT OBSTRUCTION TO ALL VEHICLES

SCALE : NOT TO SCALE REFER ONLY TO MEASUREMENTS

Please see formal notice, to see what other roads have restrictions proposed, where to view the plans and traffic order and how to object or support this proposal



CONTROLLED PARKING ZONE Q



PLAN SHOWING PROPOSED CHANGES TO PARKING RESTRICTION

DYKE ROAD, BRIGHTON

KEY:- $\text{xx} \rightleftharpoons \text{xx}$ PROPOSED NO LOADING BAN MON TO FRI 8AM – 9AM & 3PM – 6PM

REASON:- TO PREVENT VEHICLES OBSTRUCTING THE ROAD AND FOOTPATH AT PEAK TIMES

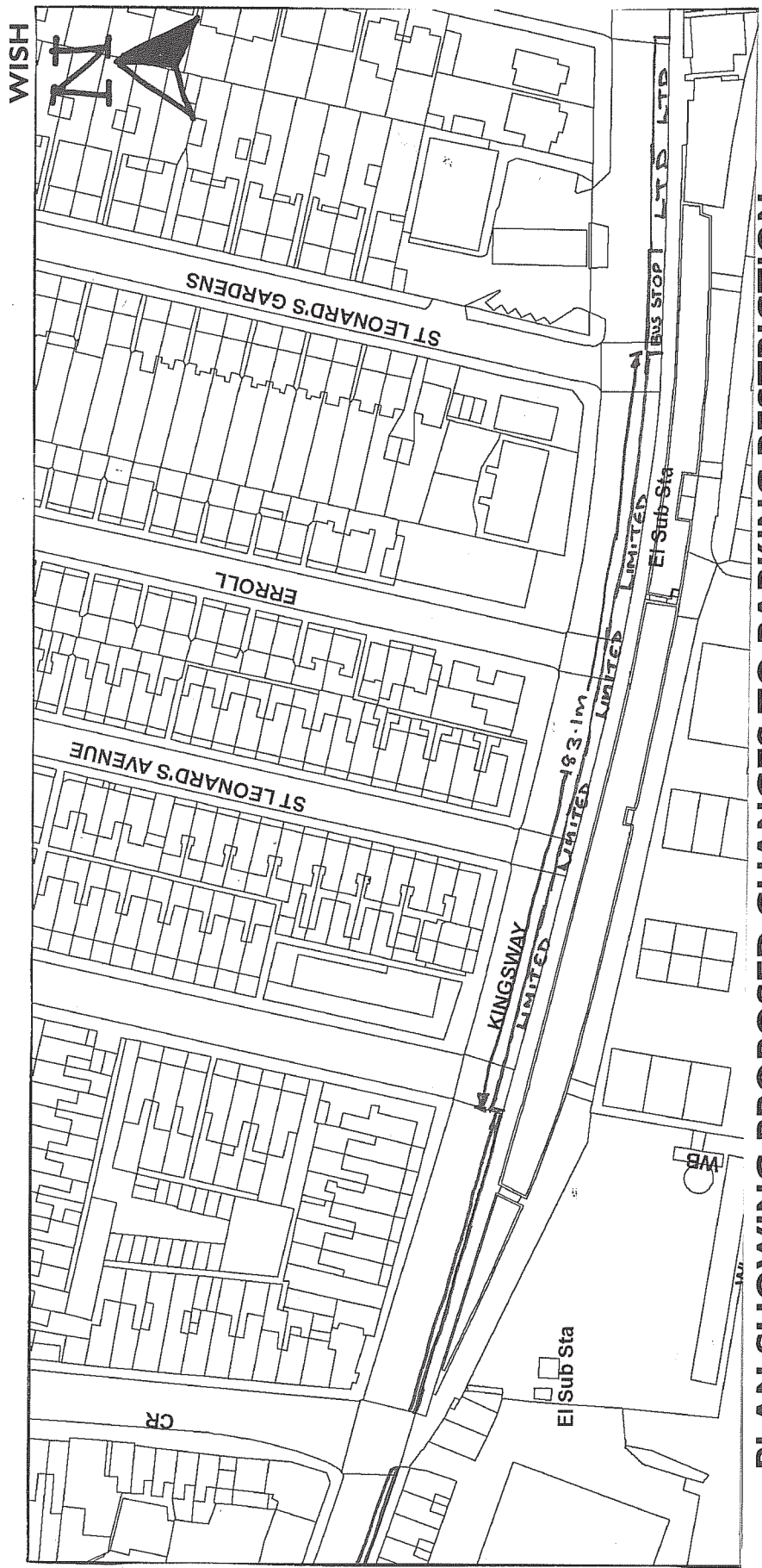
SCALE : NOT TO SCALE REFER ONLY TO MEASUREMENTS

Please see formal notice, to see what other roads have restrictions proposed, where to view the plans and traffic order and how to object or support this proposal



Brighton & Hove

Reproduction from the Ordnance Survey mapping with the Permission of the Controller of H.M. Stationery Office. © Crown Copyright . Unauthorised reproduction infringes Crown copyright and may lead to prosecution or Civil Proceedings. Brighton & Hove Council. Licence : LA09068L, 2003.



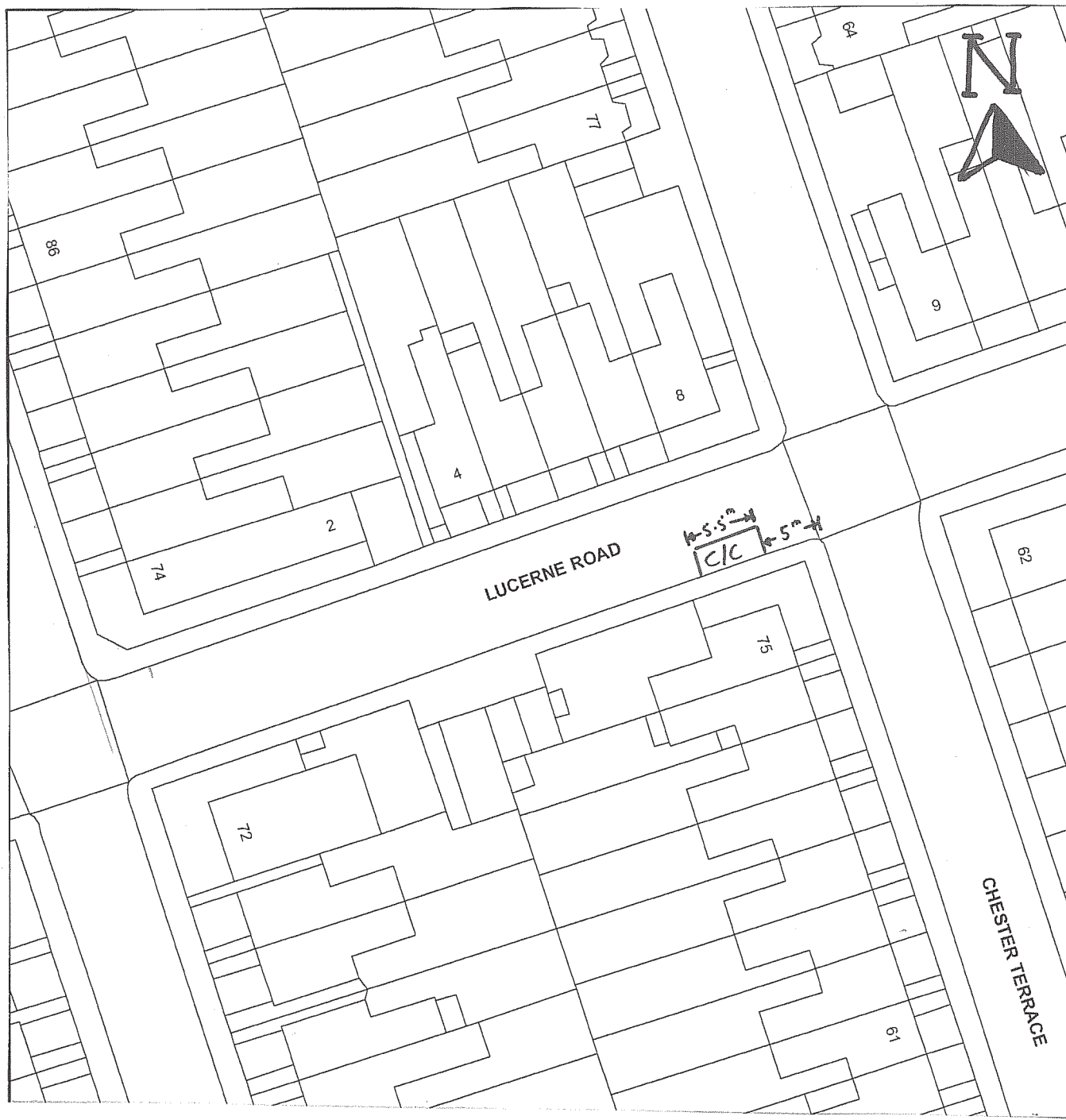
PLAN SHOWING PROPOSED CHANGES TO PARKING RESTRICTION KINGSWAY, HOVE

- KEY:-**
- LIMITED PROPOSED LIMITED WAITING MONDAY TO SATURDAY 8AM TO 6PM 2 HOURS NO RETURN WITHIN 1 HOUR
 - LTD EXISTING LIMITED WAITING MONDAY TO SATURDAY 8AM TO 6PM 2 HOURS NO RETURN WITHIN 1 HOUR
 - BUS STOP EXISTING BUS STOP
 - ==== EXISTING DOUBLE YELLOW LINES

REASON:- TO PROVIDE PARKING FOR NEARBY FACILITIES

SCALE : NOT TO SCALE REFER ONLY TO MEASUREMENTS

Reproduction from the Ordnance Survey mapping with the Permission of the Controller of H.M. Stationery Office. © Crown Copyright. Unauthorised reproduction infringes Crown copyright and may lead to prosecution or Civil Proceedings. Brighton & Hove Council. Licence : LA09068L, 2003.



PLAN SHOWING PROPOSED CHANGES TO PARKING RESTRICTION
LUCERNE ROAD, BRIGHTON

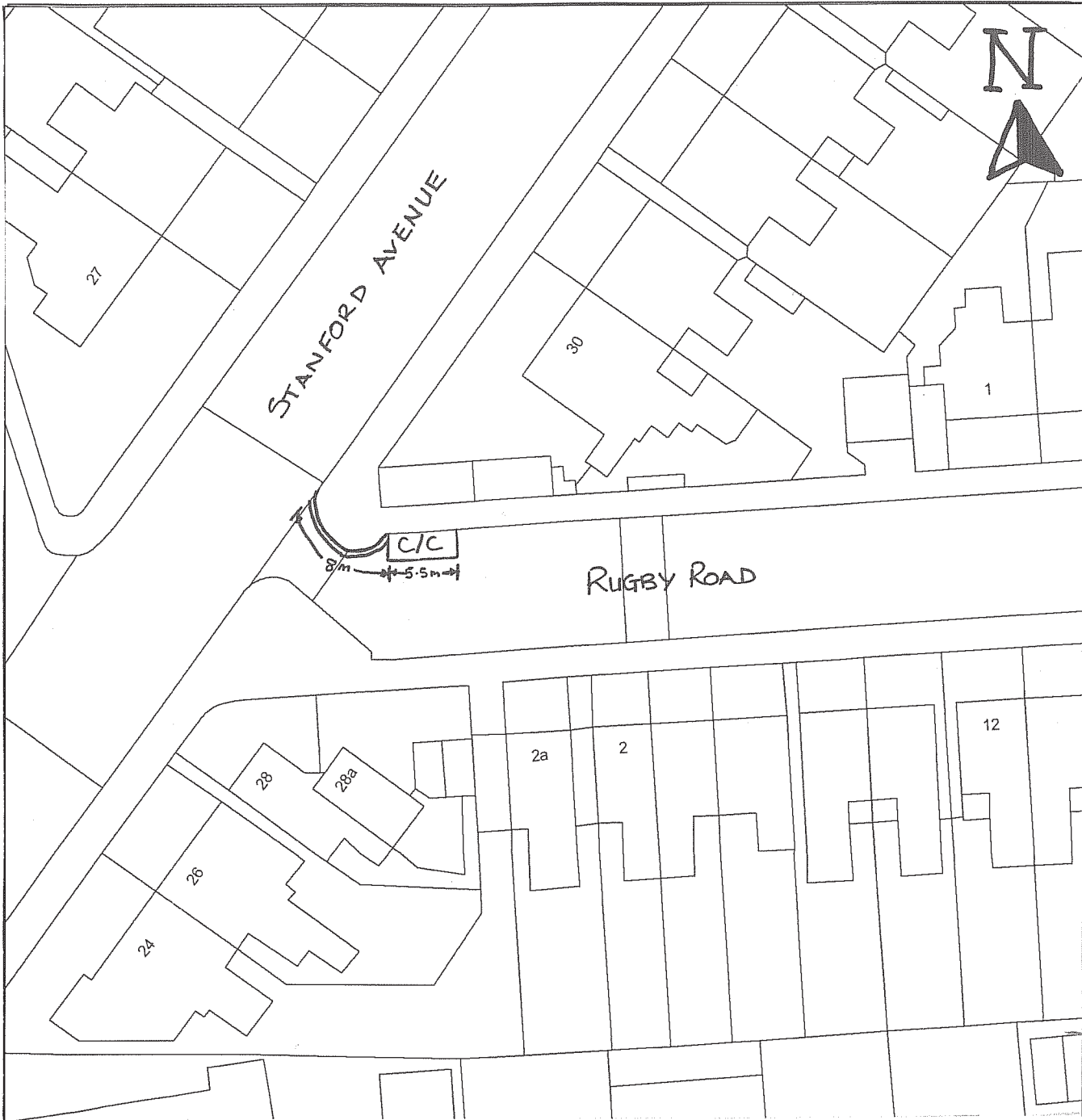
KEY:- C/C PROPOSED CAR CLUB BAY

REASON:- TO PROVIDE A DESIGNATED PARKING BAY FOR VEHICLES USED BY BRIGHTON & HOVE CAR CLUB OPERATORS

SCALE : NOT TO SCALE REFER ONLY TO MEASUREMENTS

Reproduction from the Ordnance Survey mapping with the Permission of the Controller of H.M. Stationery Office. © Crown Copyright . Unauthorised reproduction infringes Crown copyright and may lead to prosecution or Civil Proceedings. Brighton & Hove Council. Licence : LA09068L, 2003.





PLAN SHOWING PROPOSED CHANGES TO PARKING RESTRICTION

RUGBY ROAD, BRIGHTON

KEY:-  PROPOSED CAR CLUB BAY

REASON:- TO PROVIDE A DESIGNATED PARKING BAY FOR VEHICLES USED BY BRIGHTON & HOVE CAR CLUB OPERATORS

SCALE : **NOT TO SCALE REFER ONLY TO MEASUREMENTS**

Reproduction from the Ordnance Survey mapping with the Permission of the Controller of H.M. Stationery Office. © Crown Copyright . Unauthorised reproduction infringes Crown copyright and may lead to prosecution or Civil Proceedings. Brighton & Hove Council. Licence : LA09068L, 2003.



CONTROLLED PARKING ZONE U



PLAN SHOWING PROPOSED CHANGES TO PARKING RESTRICTION

SUTHERLAND ROAD, BRIGHTON

KEY:- CIC PROPOSED CAR CLUB BAY

REASON:- TO PROVIDE A DESIGNATED PARKING BAY FOR VEHICLES USED BY BRIGHTON & HOVE CAR CLUB OPERATORS

SCALE : NOT TO SCALE REFER ONLY TO MEASUREMENTS

Reproduction from the Ordnance Survey mapping with the Permission of the Controller of H.M. Stationery Office. © Crown Copyright. Unauthorised reproduction infringes Crown copyright and may lead to prosecution or Civil Proceedings. Brighton & Hove Council. Licence : LA09068L, 2003.





PLAN SHOWING PROPOSED CHANGES TO PARKING RESTRICTION

ST ANDREW'S ROAD, PORTSLADE

KEY:- PROPOSED DOUBLE YELLOW LINES

REASON:- TO IMPROVE SAFETY FOR BOTH PEDESTRAINS AND VEHICLES IT HELPS TO PREVENT OBSTRUCTION TO ALL VEHICLES

SCALE : NOT TO SCALE REFER ONLY TO MEASUREMENTS

Please see formal notice, to see what other roads have restrictions proposed, where to view the plans and traffic order and how to object or support this proposal

SOUTH PORTSLADE



PLAN SHOWING PROPOSED CHANGES TO PARKING RESTRICTION

ST ANDREW'S ROAD, PORTSLADE

KEY:- PROPOSED DOUBLE YELLOW LINES

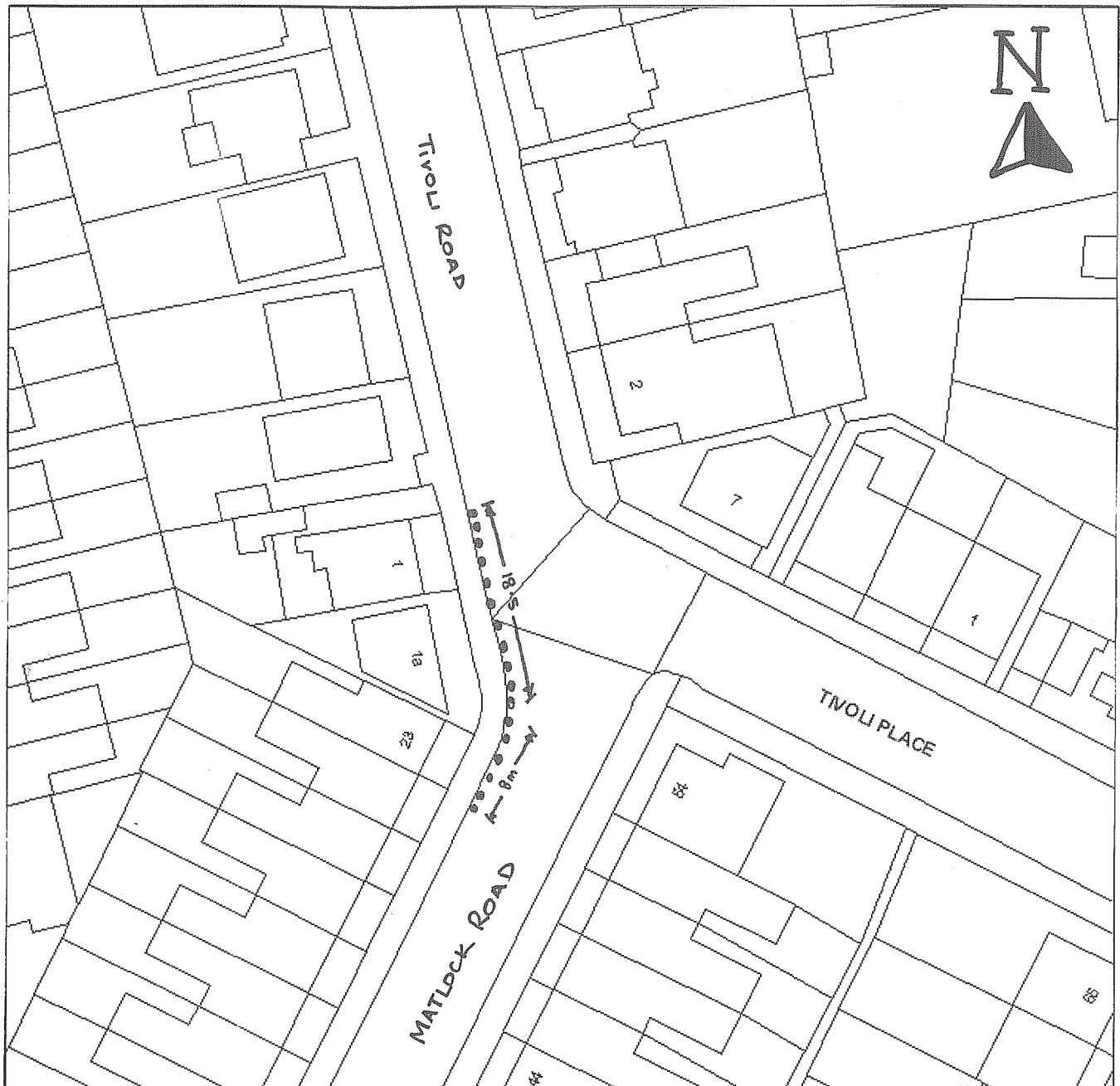
REASON:- TO IMPROVE SAFETY FOR BOTH PEDESTRAINS AND VEHICLES IT HELPS TO PREVENT OBSTRUCTION TO ALL VEHICLES

SCALE : NOT TO SCALE REFER ONLY TO MEASUREMENTS

Please see formal notice, to see what other roads have restrictions proposed, where to view the plans and traffic order and how to object or support this proposal



Reproduction from the Ordnance Survey mapping with the Permission of the Controller of H.M. Stationery Office. © Crown Copyright. Unauthorised reproduction infringes Crown copyright and may lead to prosecution or Civil Proceedings. Brighton & Hove Council. Licence : LA09068L, 2003.



PLAN SHOWING PROPOSED CHANGES TO PARKING RESTRICTION

MATLOCK ROAD/TIVOLI ROAD, BRIGHTON

KEY:-  PROPOSED DOUBLE YELLOW LINES

REASON:- TO IMPROVE SAFETY FOR BOTH PEDESTRAINS AND VEHICLES IT HELPS TO PREVENT OBSTRUCTION TO ALL VEHICLES

SCALE : NOT TO SCALE REFER ONLY TO MEASUREMENTS

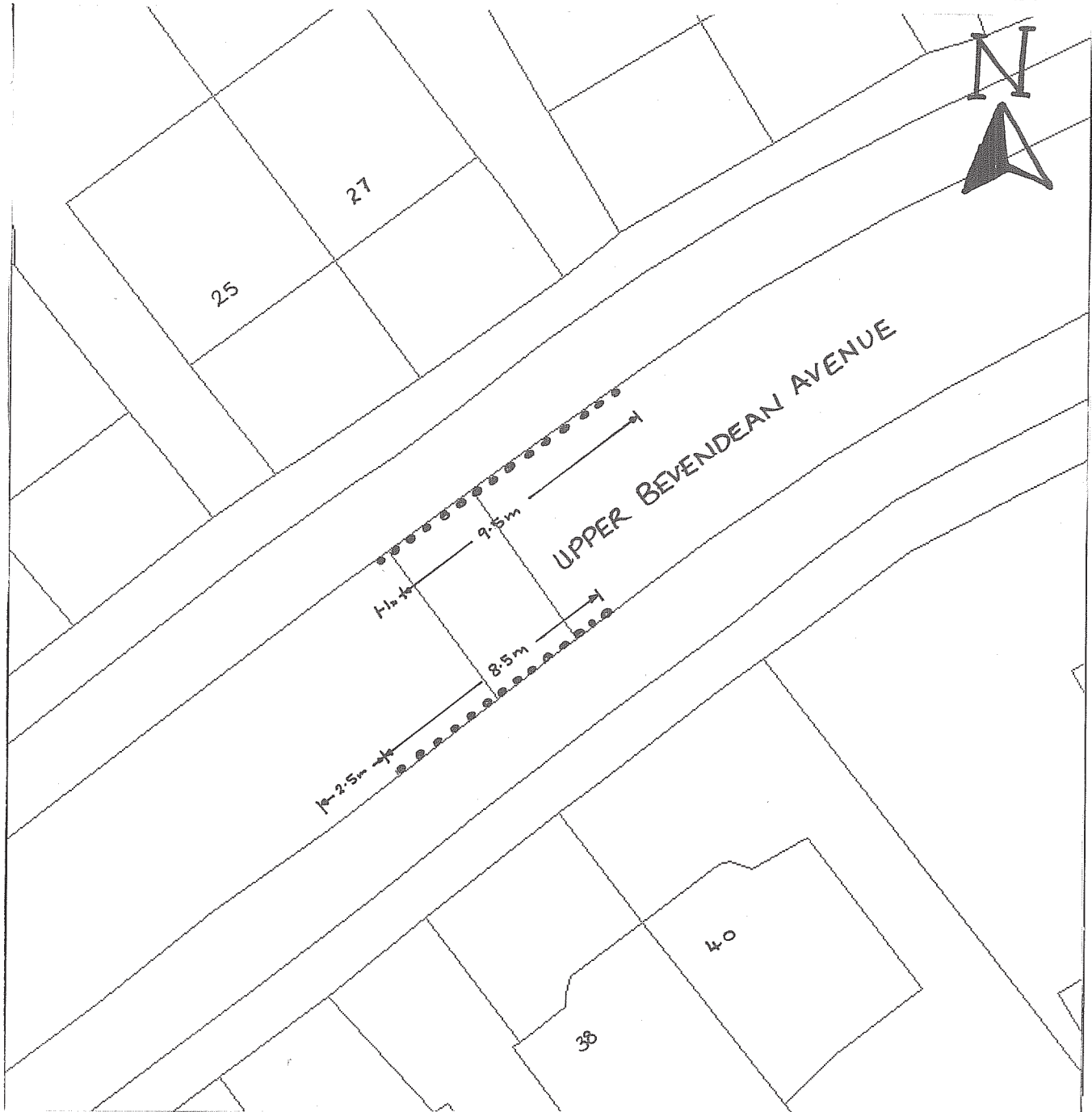
Please see formal notice, to see what other roads have restrictions proposed, where to view the plans and traffic order and how to object or support this proposal



Brighton & Hove

Reproduction from the Ordnance Survey mapping with the Permission of the Controller of H.M. Stationery Office. © Crown Copyright . Unauthorised reproduction infringes Crown copyright and may lead to prosecution or Civil Proceedings. Brighton & Hove Council. Licence : LA09068L, 2003.

MOULSECOOMB & BEVENDEAN



PLAN SHOWING PROPOSED CHANGES TO PARKING RESTRICTION

UPPER BEVENDEAN AVENUE, BRIGHTON

KEY:- PROPOSED DOUBLE YELLOW LINES

REASON:- TO PREVENT OBSTRUCTION TO ALL VEHICLES

SCALE : NOT TO SCALE REFER ONLY TO MEASUREMENTS

Please see formal notice, to see what other roads have restrictions proposed, where to view the plans and traffic order and how to object or support this proposal




CONTROLLED PARKING ZONE R



PLAN SHOWING PROPOSED CHANGES TO PARKING RESTRICTION

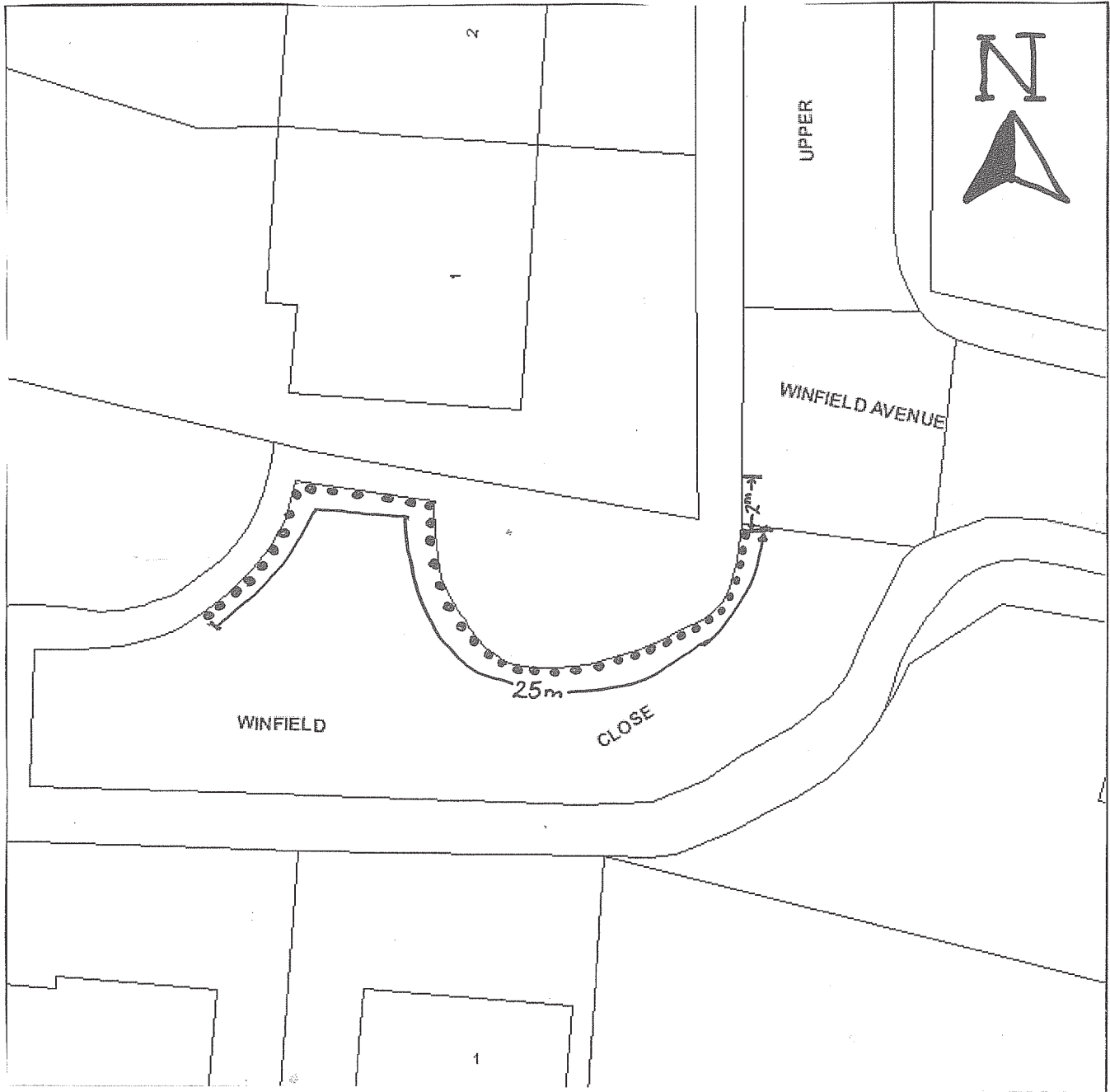
WESTBOURNE PLACE, BRIGHTON

- KEY:-**
-  PROPOSED SHARED PARKING BAYS 11 HOURS MON TO SUN 8AM TO 9PM
 -  EXISTING SHARED PARKING BAYS
 -  EXISTING DOUBLE YELLOW LINES

REASON:- TO PROVIDE ADDITIONAL PARKING SPACES FOR RESIDENTS AND VISITORS

SCALE : NOT TO SCALE REFER ONLY TO MEASUREMENTS

Reproduction from the Ordnance Survey mapping with the Permission of the Controller of H.M. Stationery Office. © Crown Copyright . Unauthorised reproduction infringes Crown copyright and may lead to prosecution or Civil Proceedings. Brighton & Hove Council. Licence : LA09068L, 2003.



PLAN SHOWING PROPOSED CHANGES TO PARKING RESTRICTION

WINFIELD CLOSE, BRIGHTON

KEY:- PROPOSED DOUBLE YELLOW LINES

REASON:- TO PREVENT OBSTRUCTION IN THE TURNING AREA AND ENABLING VEHICLES TO TURN

SCALE : NOT TO SCALE REFER ONLY TO MEASUREMENTS

Please see formal notice, to see what other roads have restrictions proposed, where to view the plans and traffic order and how to object or support this proposal